

WILL ALASKANS GET GAS FROM THE NORTH SLOPE GAS PIPELINE?

Yes. The Alaska Gasline Development Corporation (AGDC) is working to ensure that existing in-state gas demand is satisfied and is also evaluating the feasibility of bringing natural gas to areas of the state where it's not currently available.

WHERE WILL GAS BE MADE AVAILABLE IN-STATE?

No final decisions have been made. AGDC is working with the legislature, local governments, utilities and the public to identify the most appropriate locations for in-state gas off-takes. The state's delivery plans may involve a phased approach with some facilities built during pipeline construction and others conditioned on future demand growth or specific legislative policy directive.

HOW WILL GAS BE REMOVED FROM THE MAIN PIPELINE?

Moving gas from the mainline to in-state customers requires a combination of additional infrastructure: off-take facilities, spur lines, and local distribution systems. The cost of this infrastructure will be paid by third parties, perhaps the state, local governments, public utilities, end users, or a combination of these groups.

WHAT HAS BEEN DONE SO FAR?

AGDC completed a detailed forecast of natural gas demand in Alaska:

- ▶ Analyzed historical production and consumption
- ▶ Identified both existing and potential demand
- ▶ Projected most likely growth scenarios

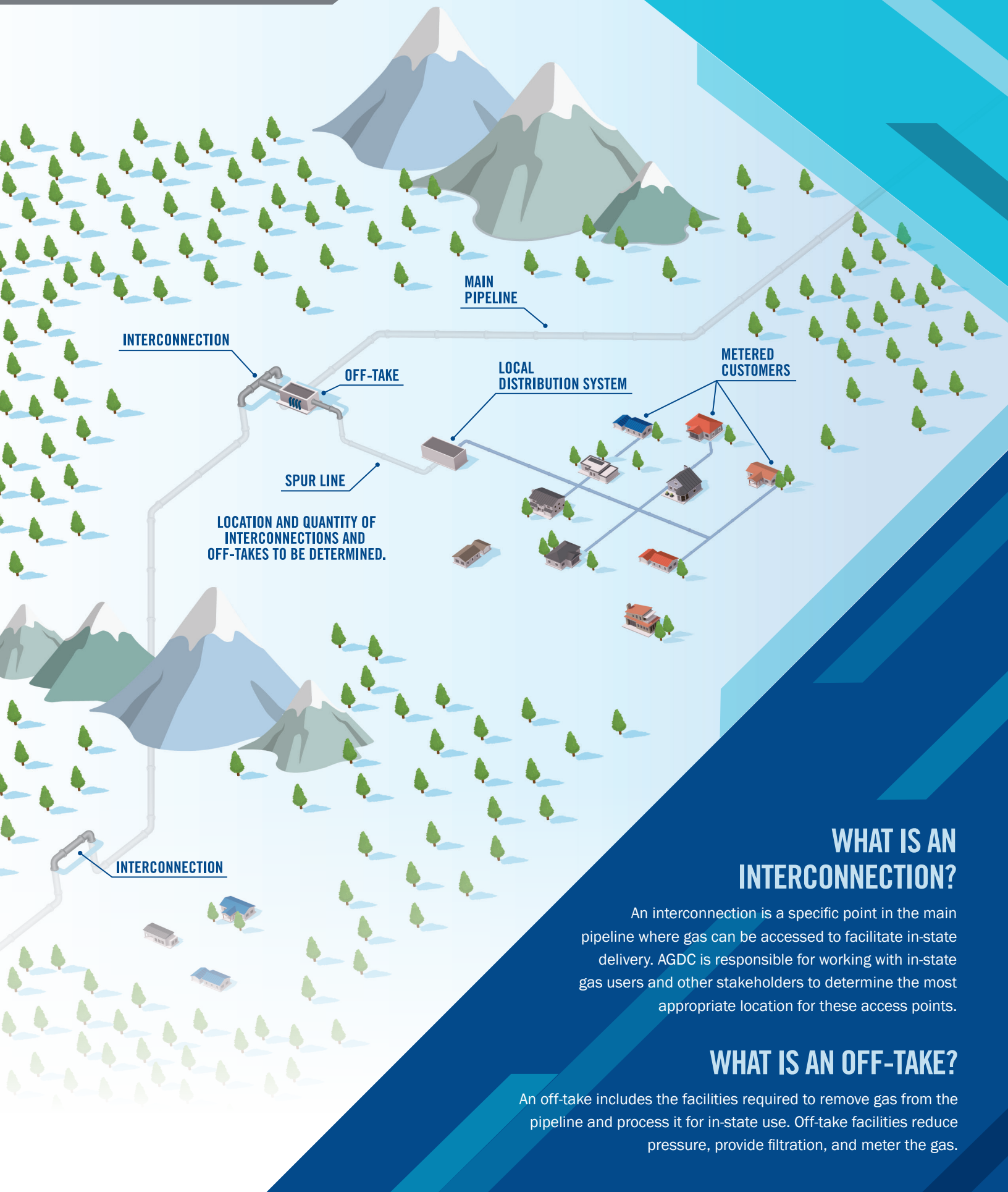
AGDC established a subsidiary to:

- ▶ Consolidate in-state gas planning activities
- ▶ Coordinate with North Slope gas suppliers and in-state users
- ▶ Help small communities analyze gas infrastructure needs
- ▶ Pool small quantities of in-state demand
- ▶ Provide information and planning assistance to policy makers

WHAT'S NEXT?

- ▶ Engage existing and potential customers to validate in-state gas needs
- ▶ Evaluate in-state delivery economics including commercial terms and infrastructure investment costs
- ▶ Secure a gas supply from North Slope resource owners
- ▶ Collaborate with policy makers, local communities, utilities and the public to identify off-take locations

FACT SHEET



LOCATION AND QUANTITY OF INTERCONNECTIONS AND OFF-TAKES TO BE DETERMINED.

WHAT IS AN INTERCONNECTION?

An interconnection is a specific point in the main pipeline where gas can be accessed to facilitate in-state delivery. AGDC is responsible for working with in-state gas users and other stakeholders to determine the most appropriate location for these access points.

WHAT IS AN OFF-TAKE?

An off-take includes the facilities required to remove gas from the pipeline and process it for in-state use. Off-take facilities reduce pressure, provide filtration, and meter the gas.